



# FNQ Tropical Rainforest Ozflux Daintree / Robson

## Status report.

Presentation by :

Associate Professor Mike Liddell  
James Cook University

email: [michael.liddell@jcu.edu.au](mailto:michael.liddell@jcu.edu.au)

ph: 07 4042 1275





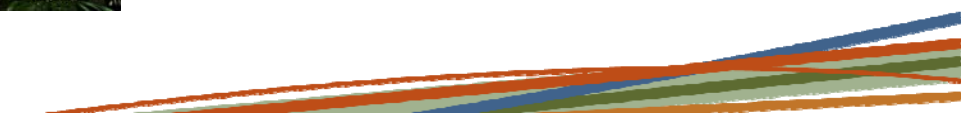
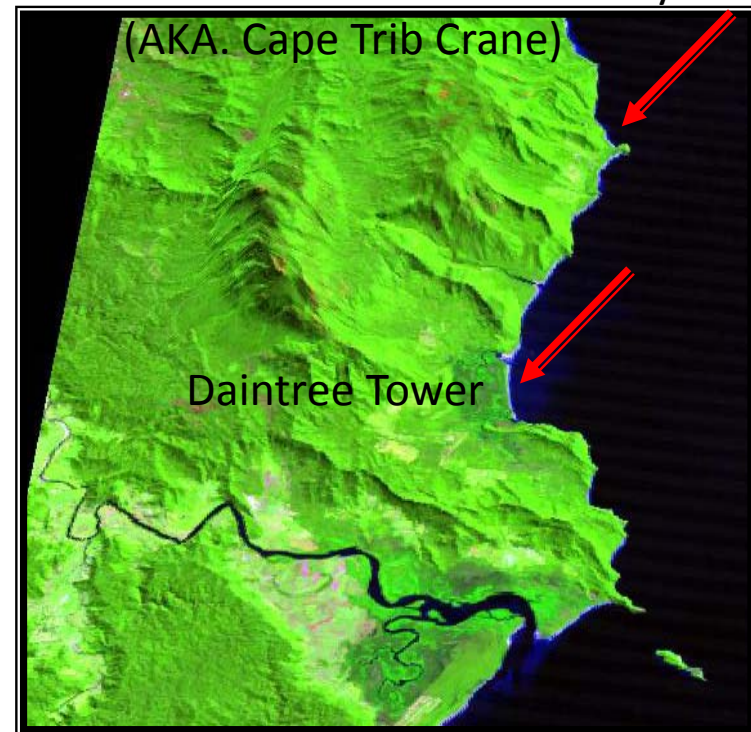
## Daintree Ozflux Sites



- ❖ Pristine lowland rainforest at both stations.
- ❖ Complex Type 1A mesophyll vine forest
- ❖ **Canopy height 25-35m**
- ❖ **Leaf area index  $\approx 4$**
- ❖ **Elevation: 65m**
- ❖ **Rainfall: 4900mm**
- ❖  **$T_{\text{mean}}$ : 24°C**
- ❖ **Lots of lightning**



Daintree Rainforest Observatory



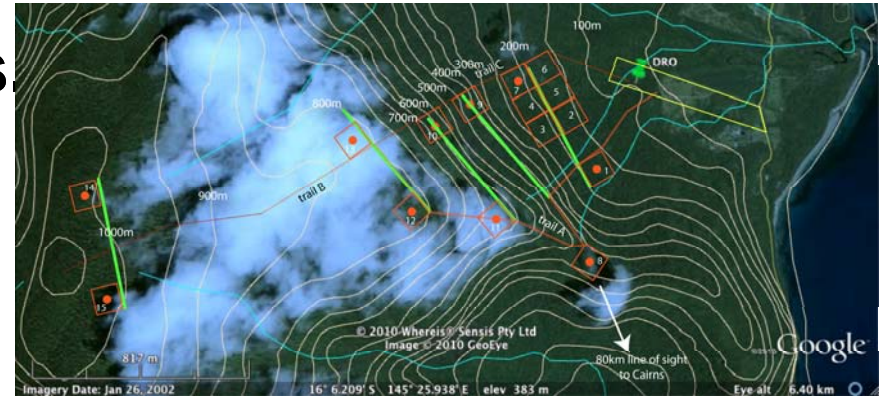
# DAINTREE RAINFOREST OBSERVATORY





# Daintree Rainforest Observatory

- ❖ Class room for 40 students
- ❖ Large basic laboratory.
- ❖ Camp-site plus a bunk-bed to accommodate 40 people.
- ❖ Large communal kitchen.
- ❖ Toilet and shower block.
- ❖ Establish ecological monitoring plots/sensors on elevational gradient.
- ❖ Establish access tracks.





# Daintree Tower

❖ TERN Ozflux Standard system.

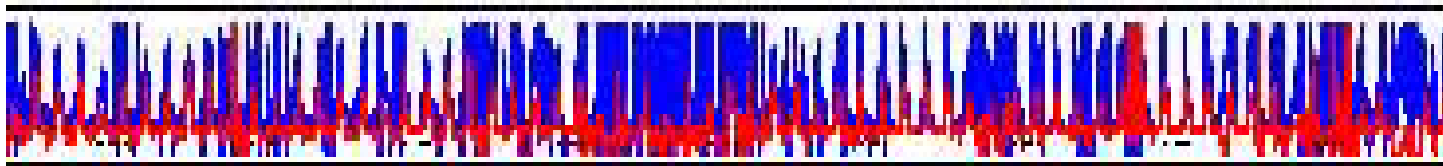




## Daintree Tower



- ❖ **On going activities :**
- ❖ **Nico : modifying Python to handle the slightly larger data set coming in.**
- ❖ **Nico : adding comms to Central node (Dropbox).**
- ❖ **Nico : hardware: tipping bucket, leaf wetness, Phenocam, sensor mounts, comms to 24V power.**
- ❖ **Mike & Jason : all data 2001 – 2011 into same format, fast read engine for fixed format, writes to format for EdiRe (will look at EdiPro).**
- ❖ **Mike & Glyn : recoding Matlab QC/gapfilling code.**
- ❖ **Last year there was 7600mm rainfall at Cape Trib!**





## Robson Creek

- ❖ **Lamb Range:** 700m  
Simple Notophyll Vine Forest (SNVF) 26 – 40m canopy
- ❖ **Soils:** Metasediments and Metamorphics.
- ❖ **Rainfall:**  $\approx 2300\text{mm}$
- ❖  **$T_{\text{mean}}$ :**  $\approx 19^{\circ}\text{C}$



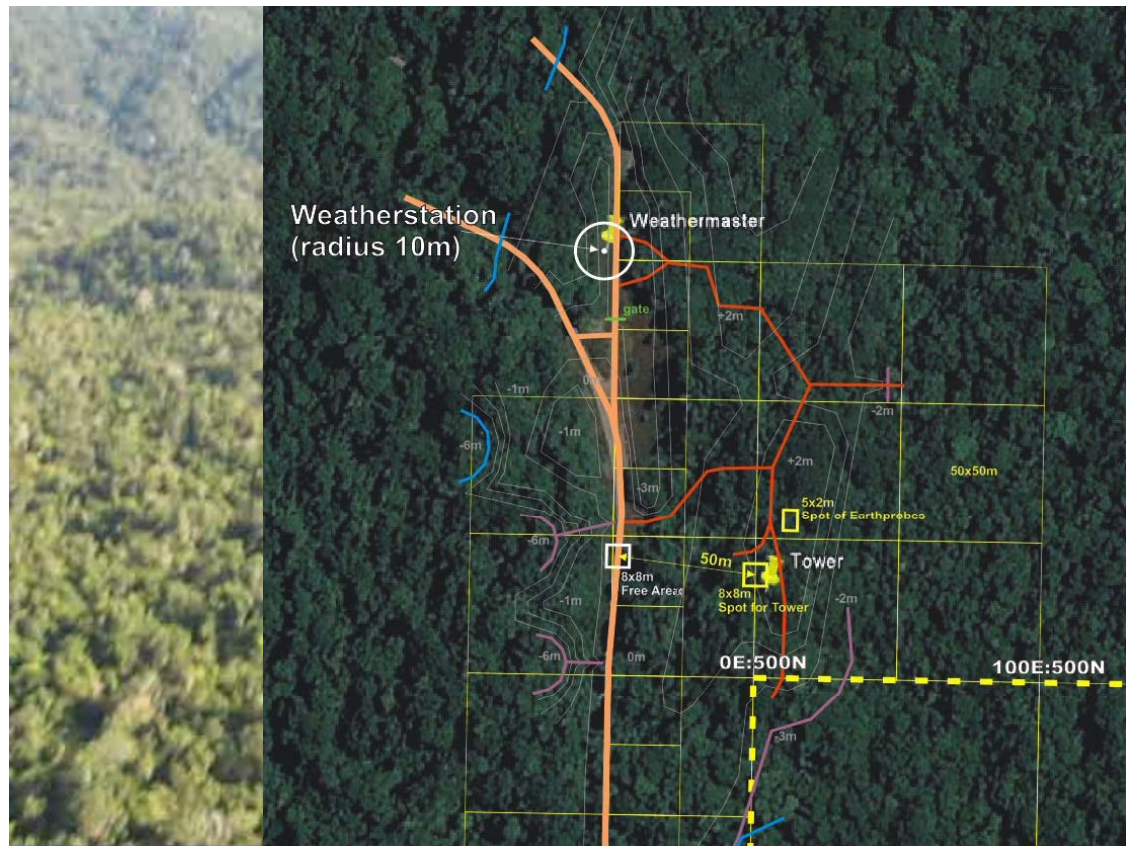


# Robson Creek

TERN

TERN-1

❖ **Sub-project 5:**  
**Forest/atmosphere**  
**CO<sub>2</sub>/H<sub>2</sub>O/Energy exchange.**  
**Soil measurements.**  
**Microclimate.**



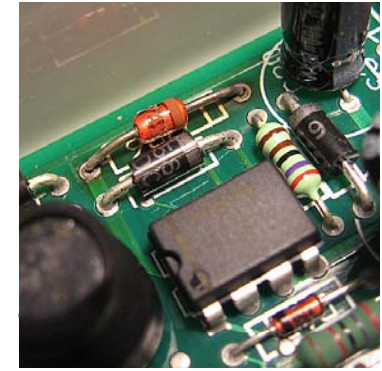




## Robson Creek : Progress

### TERN-1

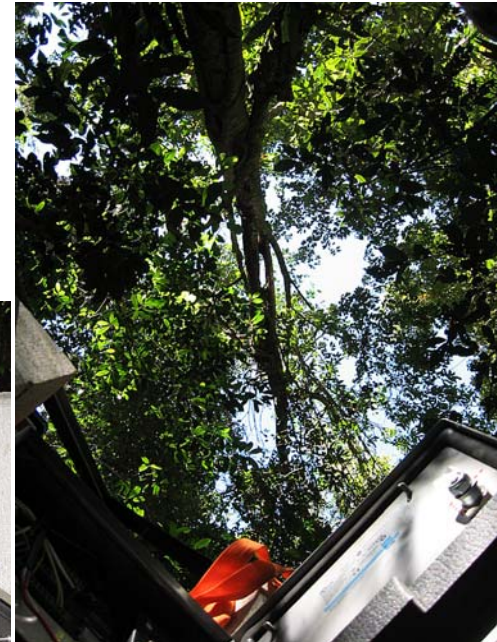
- ❖ **Sub-project 5:** Weatherstation, soilpit, bore 1 quote in for 40m 4 leg flux tower (5m x 5m).



## Robson Creek : Future

### TERN-1/TERN-EIF

- ❖ **Sub-project 5:** Complete flux tower.





# Robson Creek : Progress

## TERN-1

